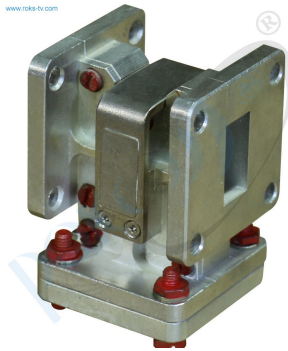




Ku-band waveguide isolator



The Ku-band waveguide isolator is used for a one-way transmission of electromagnetic waves and for equipment protection from unmatched load.

Parameter	Value
Frequency Range 9.4 - 9.9 GHz	
Waveguide	WR90
Direct Losses	0.35 dB
Isolation	23 dB
VSWR	1.2
Power	10W
Flange	FBP100
Frequency Range 12.36 - 16.7 GHz	
Waveguide	WR62
Direct Losses	0.5 dB
Isolation	20 dB
VSWR	1.25
Power	100W
Flange	FBP140

Taking into consideration that we (ROKS PrJSC) are developer and system integrator, also do not stop on our technical growth and improvement, know that view of all our devices and equipment including their technical parameters may be different from pictures presented on website and parameters listed on each device webpage.

Note! All details customer has to confirm in advance during ordering and before payment. Those parameters that were not specified and / or were not agreed while ordering will be implemented as basic at the discretion of the manufacturer. Each our customer has 1.5 year warranty and 7 year aftersales support for whole range of our products.