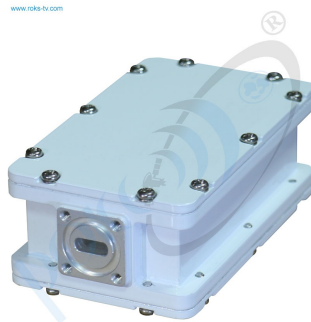




Lnb-kapxx v1



LNB-KaPxx v1 is a PLL LNB with single local oscillator and single 75Ohm F-type output. LO instability ± 250 kHz, Gain 50dB, Noise figure 3.5 dB, Output power P1dB +5 dBm.

The Low Noise Block Down Converter LNB-KaPxx v1 designed for gain and transform the RF signals from Ka-band to the L-band intermediate frequencies. This block has a waterproof case and could be mounted in close proximity to an antenna. LNB's Parameters correspond to the conditions of MVDS/MITRIS TV broadcasting systems according to standard DVB-S/S2 and could be operates up to 25 carriers. LNB-KaPxx v1 has input flange PBR220 and could be used with regular RRL or receive antennas.

KEY FEATURES:

- Flange PBR220 input
- Output power is P1dB +5 dBm
- Input frequencies Ka-band 27.5 - 28.75 GHz
- Output frequencies 900 - 2150 MHz
- Min. gain 50 dB
- Oscillator type PLL
- Operates up to 25 carriers
- Designed for operation in MVDS/MITRIS TV broadcasting systems

Input parameters:	
Input Frequency range	27.5 - 28.75 GHz
Input level, max	-45 dBm
Input VSWR, max	2.1
Input interface	Waveguide WR42, Flange PBR220
Local Oscillator:	
LO frequency	26.6 GHz
LO Phase noise:	
@1 kHz	-75 dBc/Hz
@5 kHz	-73 dBc/Hz
@10 kHz	-80 dBc/Hz
@100 kHz	-95 dBc/Hz
@1 MHz	-110 dBc/Hz
LO instability	± 250 kHz
Output parameters:	
Output frequency range	900 - 2150 MHz

Output Power @P1dB	+5 dBm
Gain, min	50 dB
Output interface	F-type female (or N-type female by order)
Output impedance	75 Ohm (50 Ohm by order)
Output VSWR, max	2.1
Frequency Response:	
Flatness over Full Band	±2 dB
Flatness over 30MHz Band	±0.4 dB
Spurious:	
Noise Figure (@+25°C)	3.5 dB max
LO leakage, max	-45 dBm
Image rejection, min	35 dBc
Power Supply:	
Input voltage	12 VDC - 24 VDC, nominal 18 VDC
Power consumption, max	5.4 W
Environmental:	
Operating temperature	-30°C to +60°C (-22°F to +140°F)
Storage temperature	-40°C to +80°C (-40°F to +176°F)
Operating humidity	0% - 95%
Mechanical	
Dimensions (W x H x D)	
Weight	

Taking into consideration that we (ROKS PrJSC) are developer and system integrator, also do not stop on our technical growth and improvement, know that view of all our devices and equipment including their technical parameters may be different from pictures presented on website and parameters listed on each device webpage.

Note! *All details customer has to confirm in advance during ordering and before payment. Those parameters that were not specified and / or were not agreed while ordering will be implemented as basic at the discretion of the manufacturer. Each our customer has 1.5 year warranty and 7 year aftersales support for whole range of our products.*