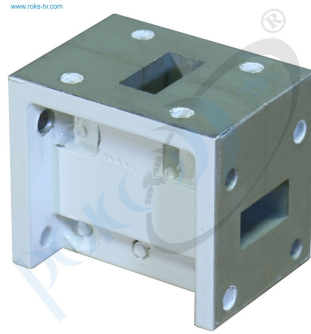




## Two way e-plane divider v.1



WR75 1/2 (2-way) E-plane power divider v.1 is waveguide tee intended for equal dividing of transmitted or received Ku-band signal between 2 antennas or other blocks.

WR75 1/2 (2-way) E-plane power divider is waveguide tee intended for equal dividing of transmitted or received Ku-band signal between 2 antennas or other blocks. Two way E-plane divider v.1 can be used in combination with [waveguide filters](#), circulators, [isolators](#) or [flexible waveguides](#) – depends on exact application. In our projects the two way E-plane divider v.1 is typically proposed in the kit with [OLSA-KUH2 V1](#).

*Taking into consideration that we (ROKS PrJSC) are developer and system integrator, also do not stop on our technical growth and improvement, know that view of all our devices and equipment including their technical parameters may be different from pictures presented on website and parameters listed on each device webpage.*

**Note!** All details customer has to confirm in advance during ordering and before payment. Those parameters that were not specified and / or were not agreed while ordering will be implemented as basic at the discretion of the manufacturer. Each our customer has 1.5 year warranty and 7 year aftersales support for whole range of our products.